





# Lonsdale District

St George's Day 2021

Sunday 25<sup>th</sup> April

# Challenge 1 Flag Design

Alex Davidson – 53<sup>rd</sup> Lancaster

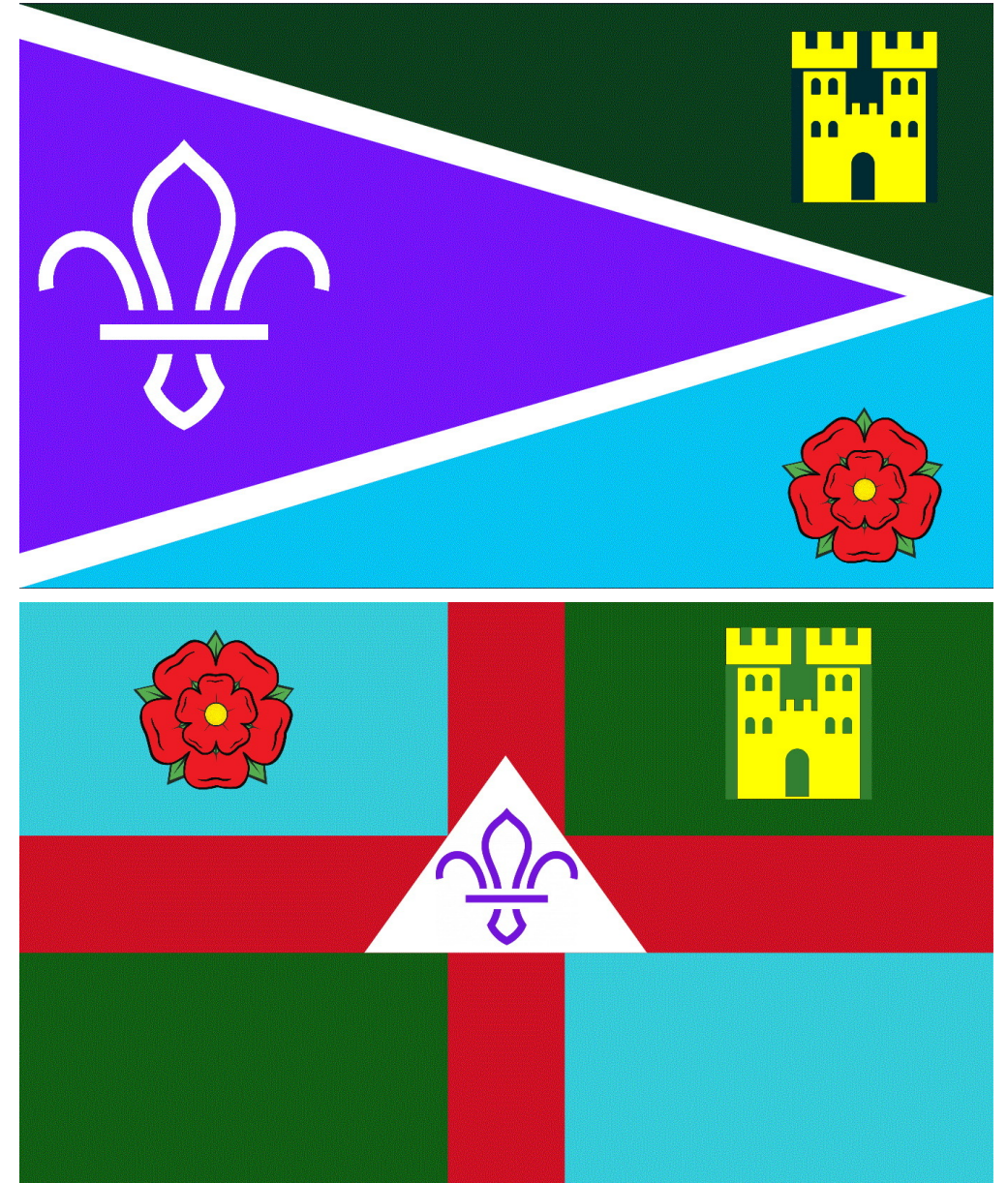
Flag 1 has colours that represent Lonsdale & Scouting – Green (Scouts & Cubs), Blue (Beavers). Horizontal Bicolour with a purple isosceles triangle in the centre with a white rim (Green & Purple Lonsdale)

Pictures - Scout Symbol with Lancaster Castle, Red Rose of Lancashire, both Symbols shown on the Lonsdale Badge and are generic symbols of the County.

I went with Isosceles triangle to represent tent shape - best bit about scouting is camps!

Flag 2 is a modified St Georges cross with Green and Blue corners (the colours symbolising Beavers, Cubs & Scouts), the 2 symbols are to represent Lonsdale and West Lancs, and the tent in the middle with a scout sign on shows camping.

Thanks also to Miles & Reis Hester from 13<sup>th</sup> Lancaster & Adam Dodgson from Centurion with Westgate





**Scouts**  
Lonsdale

# Challenge 2 Campsite Ideas

*#YouShape*

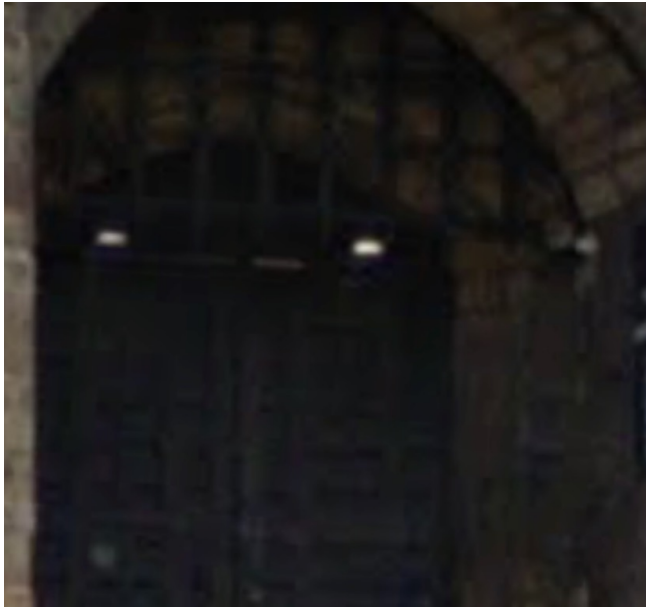
[steve.mather@lonsdalescouts.org.uk](mailto:steve.mather@lonsdalescouts.org.uk)



## Challenge 3 Geoguesser

Who got this right?

If you know where it is send us an  
interactive thumbs up 👍



## Challenge 3 Geoguesser

Who got this right?

If you know where it is send us an  
interactive thumbs up 👍



# Challenge 3 Geoguesser

Who got this right?

If you know where it is send us an  
interactive thumbs up 👍

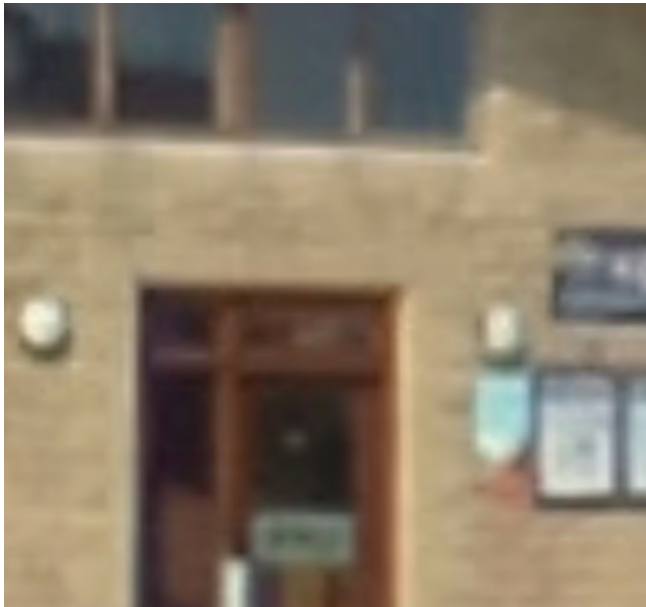




# Challenge 3 Geoguesser

Who got this right?

If you know where it is send us an interactive thumbs up 👍







# Challenge 3 Geoguesser

Who got this right?

If you know where it is send us an interactive thumbs up 👍



# Challenge 3 Geoguesser

Who got this right?

If you know where it is send us an  
interactive thumbs up 👍





## Challenge 3 Geoguesser

Who got this right?

If you know where it is send us an  
interactive thumbs up 👍





# Challenge 3 Geoguesser

Who got this right?

If you know where it is send us an  
interactive thumbs up 👍



# Challenge 3 Geoguesser

Who got this right?

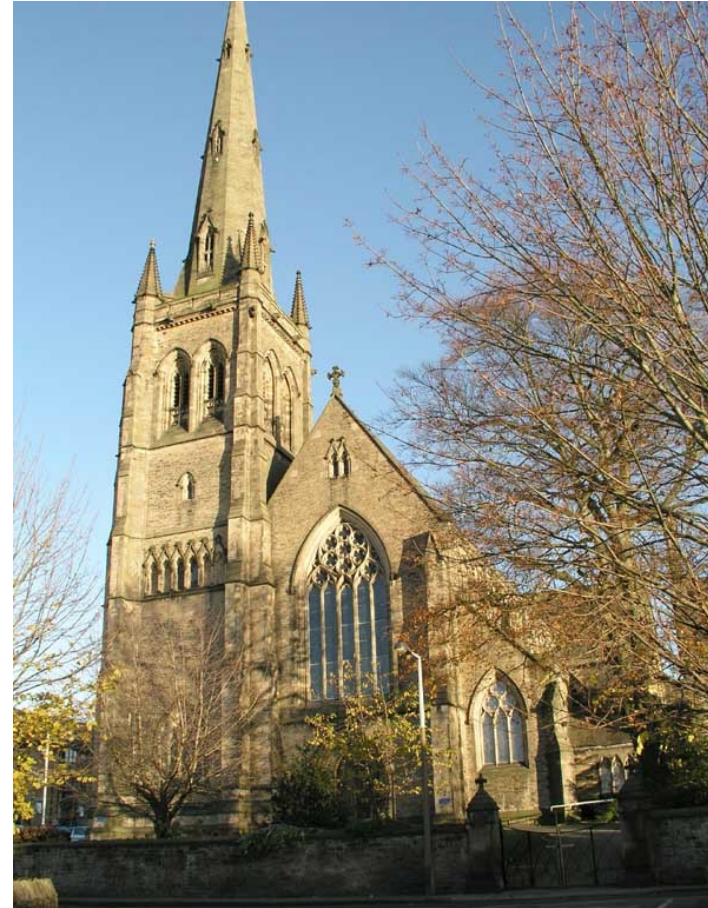
If you know where it is send us an  
interactive thumbs up 👍



## Challenge 3 Geoguesser

Who got this right?

If you know where it is send us an  
interactive thumbs up 👍



## Challenge 3 Geoguesser

Who got this right?

If you know where it is send us an  
interactive thumbs up 👍



## Challenge 3 Geoguesser

Who got this right?

If you know where it is send us an  
interactive thumbs up 👍





## Challenge 4 Lego Dragon

Congratulations to Mollie Powell a  
Beaver from 16<sup>th</sup> Morecambe for this  
fantastic red Lego dragon



# Challenge 5 Scout Symbol

Superb use of fruit from Ethan Hester a  
Beaver at 13<sup>th</sup> Lancaster





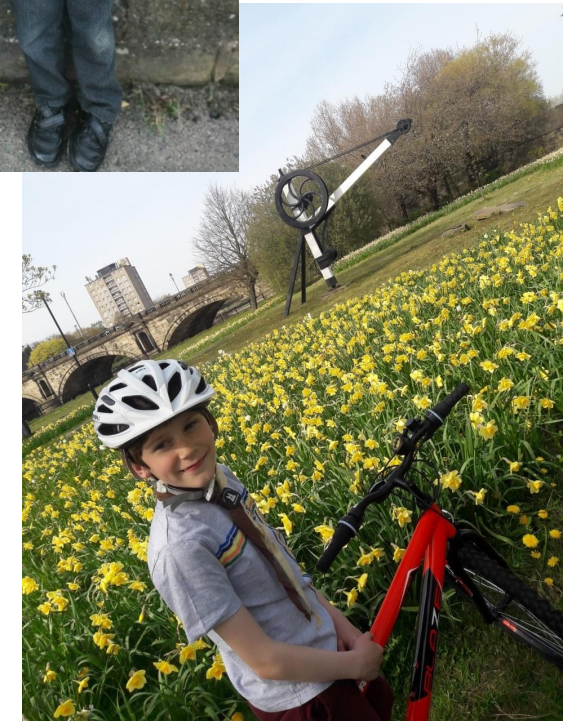
## Challenge 6 Knecker

Excellent response for the knecker wearing challenge.

Winners were two from Centurion with Westgate who proudly wore their uniform to school.

Congratulations Lucas & Thomas Calvert

Extra mention for Arthur Tuck a 23<sup>rd</sup> Lancaster Beaver and Emily Lavender a member of our St Georges team



# Challenge Winners

- All ten persons mentioned to receive a St Georges Day Badge
- 5 Challenge winners to also receive a Scout stainless steel water bottle



# Renewal of Promises

- Beavers – Mandy Seddon (ADC Beavers)
- Cubs – Andrew Baker (ADC Cubs)
- Scouts, Explorers, Network & Adults – Fiona Wetton (ADC Scouts), Jamie Carbert (DESC)

# Awards



Scouting Commendation	
Simon Wright – Warton	Nichola Warburton – Bolton-le-Sands
Julie Stott – 23rd Lancaster	Adrian Steele – Warton
Stephen Rose – Westgate	Clare Rose – Westgate
Samantha Hester – 13th Lancaster	Simon Hester – 13th Lancaster
Nigel Davis – 16 <sup>th</sup> Lancaster	Harriet Butterfield – Warton
Adrian Nutter – Warton	Alasdair Phillips – Saints Explorers
Heather Dixon – Centurion with Westgate	Jim Cooper – Carnforth
Paul Burrows – 16th Lancaster	Roger Crewdson – 16th Morecambe
Shelley Harvey – Bolton-le-Sands	Sonja Lockton – Slyne
Tansy Wickham-Pusey – Castleton ESU	Deborah White – 16 <sup>th</sup> Morecambe

# Awards

## Award for Merit

Louise Ash – 35<sup>th</sup> Lancaster

Janet Sargent – 53<sup>rd</sup> Lancaster

Jennifer Moore – 16<sup>th</sup> Morecambe

Chris Bainbridge – Discovery ESU

Debbie Mather – Warton

Louise Tuck – 23<sup>rd</sup> Lancaster



## Bar to the Award for Merit

Martin Browitt – 33<sup>rd</sup> Lancaster

Jill Sloan - SASU



# Awards

## Bar to the Silver Acorn

- Howard Greenwood – Warton Scout Group





# Awards

## Award for Meritorious Conduct

“In recognition of the dedication to Scouts despite the difficulties they have endured”

- Graeme Bradshaw – 13<sup>th</sup> Lancaster



# What's to look forward too?

From	To	Event	Location	Section(s)
Fri 27 <sup>th</sup> Aug	Sun 29 <sup>th</sup> Aug	Network Summer Weekender	Bibby's Farm	Network
Fri 17 <sup>th</sup> Sept	Sun 19 <sup>th</sup> Sept	Mountain Adventure Challenge	Lake District	Explorers
Sat 18 <sup>th</sup> Sept		Beaver Funday	Waddecar	Beavers
Fri 1 <sup>st</sup> Oct	Sun 3 <sup>rd</sup> Oct	County Explorer Scout Camp	Great Tower	Explorers
Fri 8 <sup>th</sup> Oct	Sun 10 <sup>th</sup> Oct	County Rally	Waddecar	Scouts
Sat 16 <sup>th</sup> Oct		Multi Activity Day	Waddecar	Cubs
Sat 13 <sup>th</sup> Nov		Service Crew Challenge	Beacon Fell	S/E/N
6 <sup>th</sup> Aug '22	13 <sup>th</sup> Aug '22	Red Rose	Lake District	

# Scout Radio

[www.scout.radio/play](http://www.scout.radio/play)

## St. George's Day Live 2021



- 10.30-11am **The Warm Up** with Callum
- 11-1pm **Roll Call** with Kayleigh
- 1-3pm **Lunch and Renewal** with Roger + Glenn
- 3-5.30pm **ScoutCast** with Jack, Amy + Bianca
- 5.30-7pm **Quiz** with Adam, Alice + Alex
- 7-9pm **Disco** with Laura

